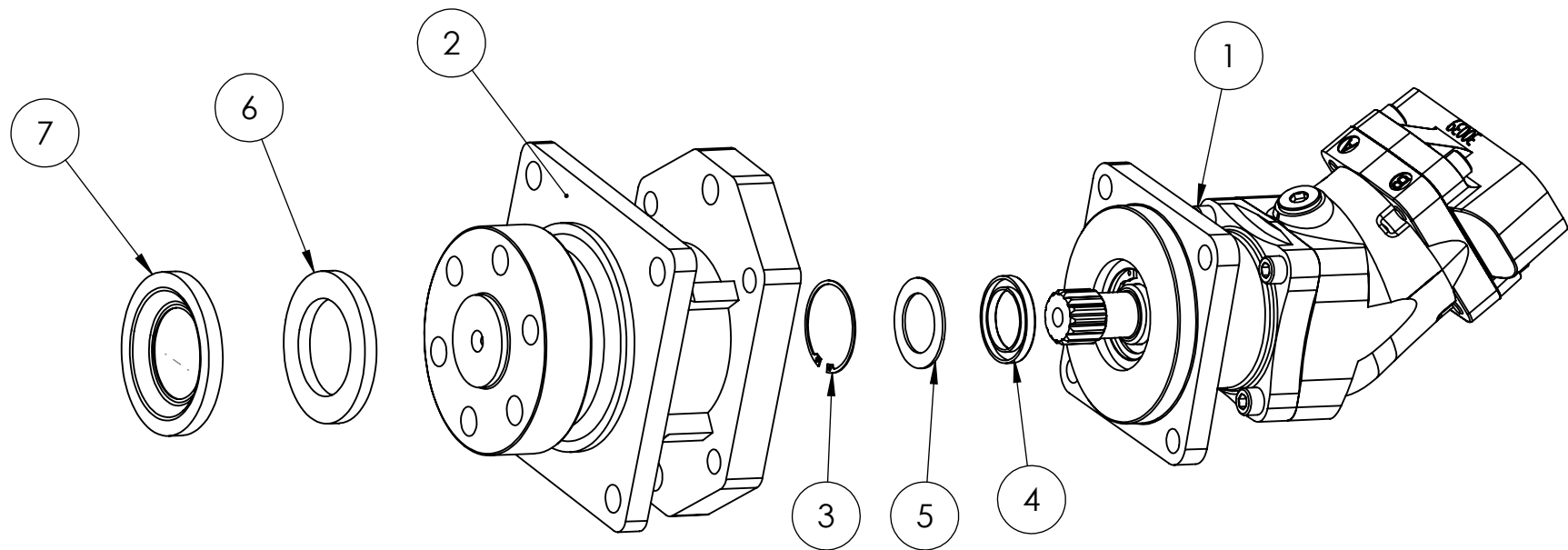


ITEM NO.	PART NUMBER	DESCRIPTION	QTY.
1	D001215	C530 16-30 gpm 4,000 psi Bent Axis Piston Motor 47cc	1
2	D002252	Bearing Support - MDB-40 (MDH40C114F1)	1
3	D002133	Snap Ring for Sunfab motor SAE-C	1
4	D001366	High pressure shaft seal for Sunfab motor SAE-C	1
5	D002132	shaft Washer for Sunfab motor SAE-C	1
6	060183	Lip Seal Output - Exterior -60 x 90 x 8	1
7	240567	Seal Protector - exterior output	1



PROPRIETARY AND CONFIDENTIAL
 THE INFORMATION CONTAINED IN THIS
 DRAWING IS THE SOLE PROPERTY OF
BAUMALIGHT. ANY REPRODUCTION IN
 PART OR AS A WHOLE WITHOUT THE
 WRITTEN PERMISSION OF **BAUMALIGHT**
 IS PROHIBITED.



Description

47cc Bent Axis Piston Motor option

Weight
62.6288lbs.

DATE
11/12/2009

DWG. NO.

T530

REV
A

DO NOT SCALE DRAWING

SCALE: 1:10

SHEET 1 OF 1

5

4

3

2

1