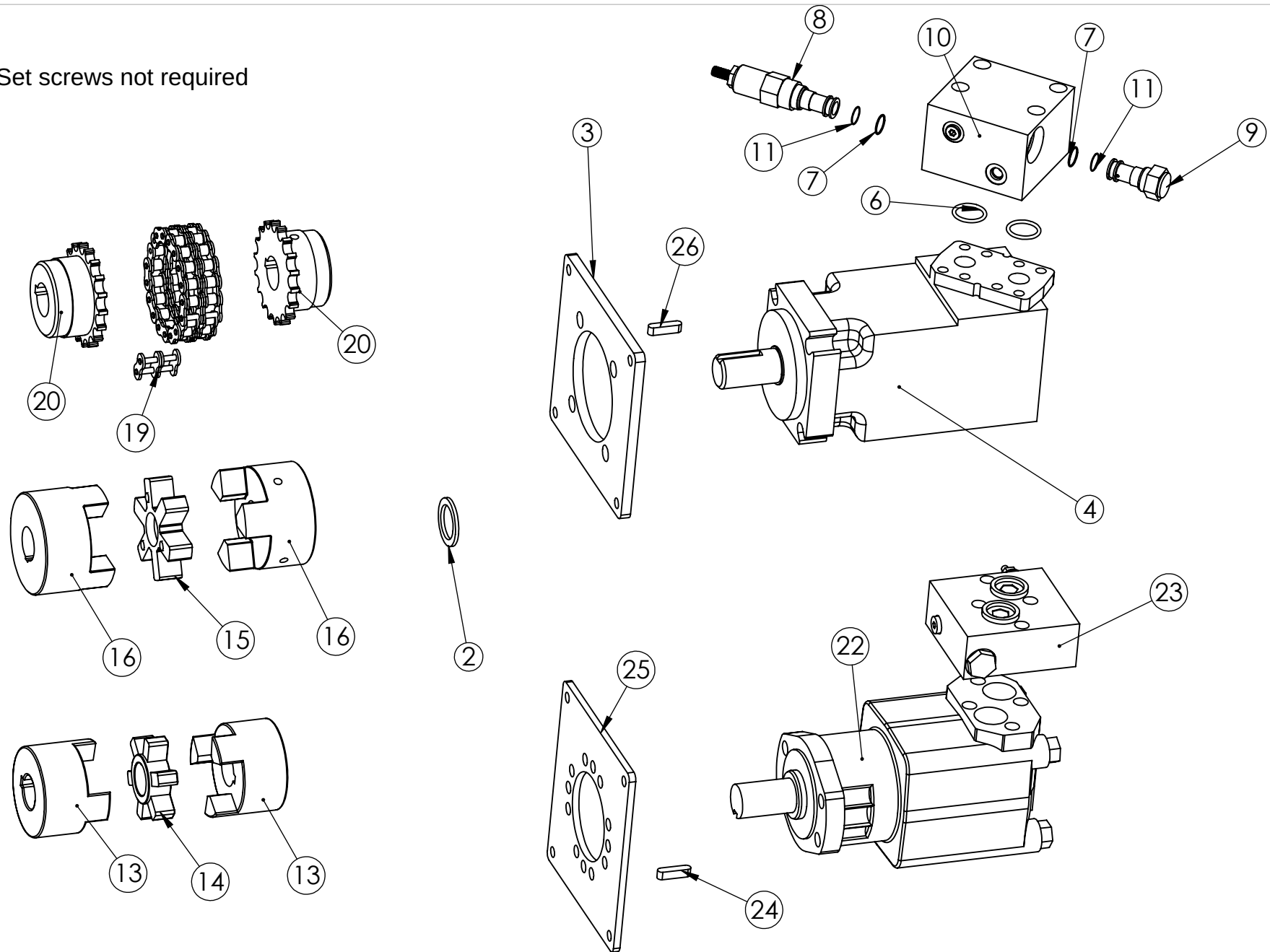


Note : Set screws not required



PROPRIETARY AND CONFIDENTIAL
THE INFORMATION CONTAINED IN THIS
DRAWING IS THE SOLE PROPERTY OF
BAUMALIGHT. ANY REPRODUCTION IN
PART OR AS A WHOLE WITHOUT THE
WRITTEN PERMISSION OF BAUMALIGHT
IS PROHIBITED.



Description

Weight
lbs.

DATE
7/3/2013

SCALE: 1:10

SHEET 1 OF 2

DWG. NO.

S550

REV
A

ITEM NO.	PART NUMBER	DESCRIPTION	QTY.
1	D001374	Cat motor spacer 1.25" shaft	1
2			-
3	D001404	B-mount plate	1
4	D001007	Char Laynn 24 GPM Motor	1
5	D001009	Anti-Cavitation check valve assembly	1
6	D001982	#214 O-Ring	2
7	D001981	#116 O-Ring	2
8	D001984	Pressure Relief Valve	1
9	D001983	Anti-cavitation Check Valve	1
10	D001009	B-mount valve	1
11	D001987	#114 O-Ring	2
12	B2000	L110 Flex	1
13	B2012	Flex Hub L110 1.25"	1
14	B2013	L110 Flex	1
15	D002420	Flex L150 Hytrel Insert	1
16	D002419	Flex Hub L150 - 1.25" Keyed	2
17	D003999	A-mount chain coupler assembly	1
18	D003749	A Mount Coupler Chain 5018	1
19	D004614	5018 chain link with clip	9
20	D003748	chain link coupler 1-1/4 x 5/16 keyway	2
21	D004610	D004796 Motor with D004782 Relief Block	1
22	D004796	550 series motor - 160cc - Tella SMH-160-MKMV	1
23	D004782	Relief block for D004610 motor	1
24	D004806	Key Stock 5/16" x 1-1/4"	1
25	D001503	A motor mount	1
26	D004806	Key Stock 5/16" x 1-1/4"	1

PROPRIETARY AND CONFIDENTIAL
 THE INFORMATION CONTAINED IN THIS
 DRAWING IS THE SOLE PROPERTY OF
BAUMALIGHT. ANY REPRODUCTION IN
 PART OR AS A WHOLE WITHOUT THE
 WRITTEN PERMISSION OF **BAUMALIGHT**
 IS PROHIBITED.



Description

Weight
lbs.

DATE

DWG. NO.

REV
A

DO NOT SCALE DRAWING

SCALE: 1:10

SHEET 2 OF 2