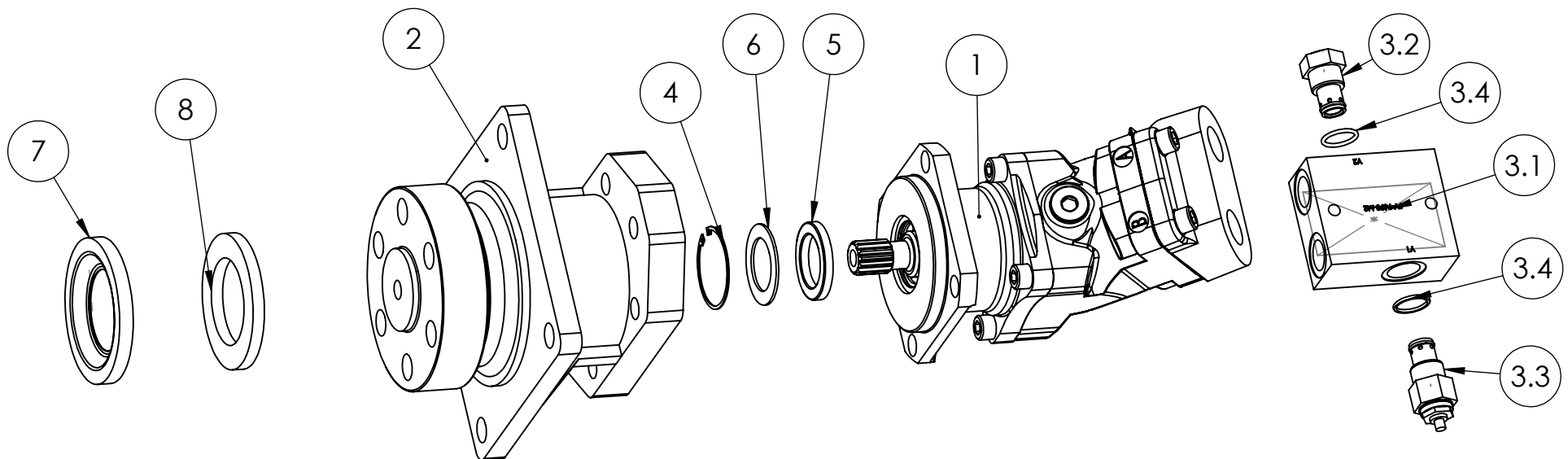


ITEM NO.	PART NUMBER	DESCRIPTION	QTY.
1	D001844	C510 Motor part (34cc)	1
2	D002251	Bearing Support - MDH-40 (MDH40B113F1)	1
3	D001845	C510 Relief and Anti-Cav Remote Valve block Sunfab threaded Port (sun motor)	1
3.1	D002137	Block	1
3.2	D002136	Check valve for D001845 Block	1
3.3	D002135	Relief valve for D001845 block	1
3.4	D002138	#116 O-Ring	2
4	D002133	Snap Ring for Sunfab motor SAE-C	1
5	D001366	High pressure shaft seal for Sunfab motor SAE-C	1
6	D002132	shaft Washer for Sunfab motor SAE-C	1
7	240696	Seal Protector - exterior output	1
8	060183	Lip Seal Output - Exterior -60 x 90 x 8	1



**PROPRIETARY AND CONFIDENTIAL**  
 THE INFORMATION CONTAINED IN THIS  
 DRAWING IS THE SOLE PROPERTY OF  
**BAUMALIGHT**. ANY REPRODUCTION IN  
 PART OR AS A WHOLE WITHOUT THE  
 WRITTEN PERMISSION OF **BAUMALIGHT**  
 IS PROHIBITED.



Description

34cc High Speed Motor option

Weight  
lbs.

DATE

10/21/2013

DWG. NO.

**HX510**

REV  
**A**

DO NOT SCALE DRAWING

SCALE: 1:10

SHEET 1 OF 1