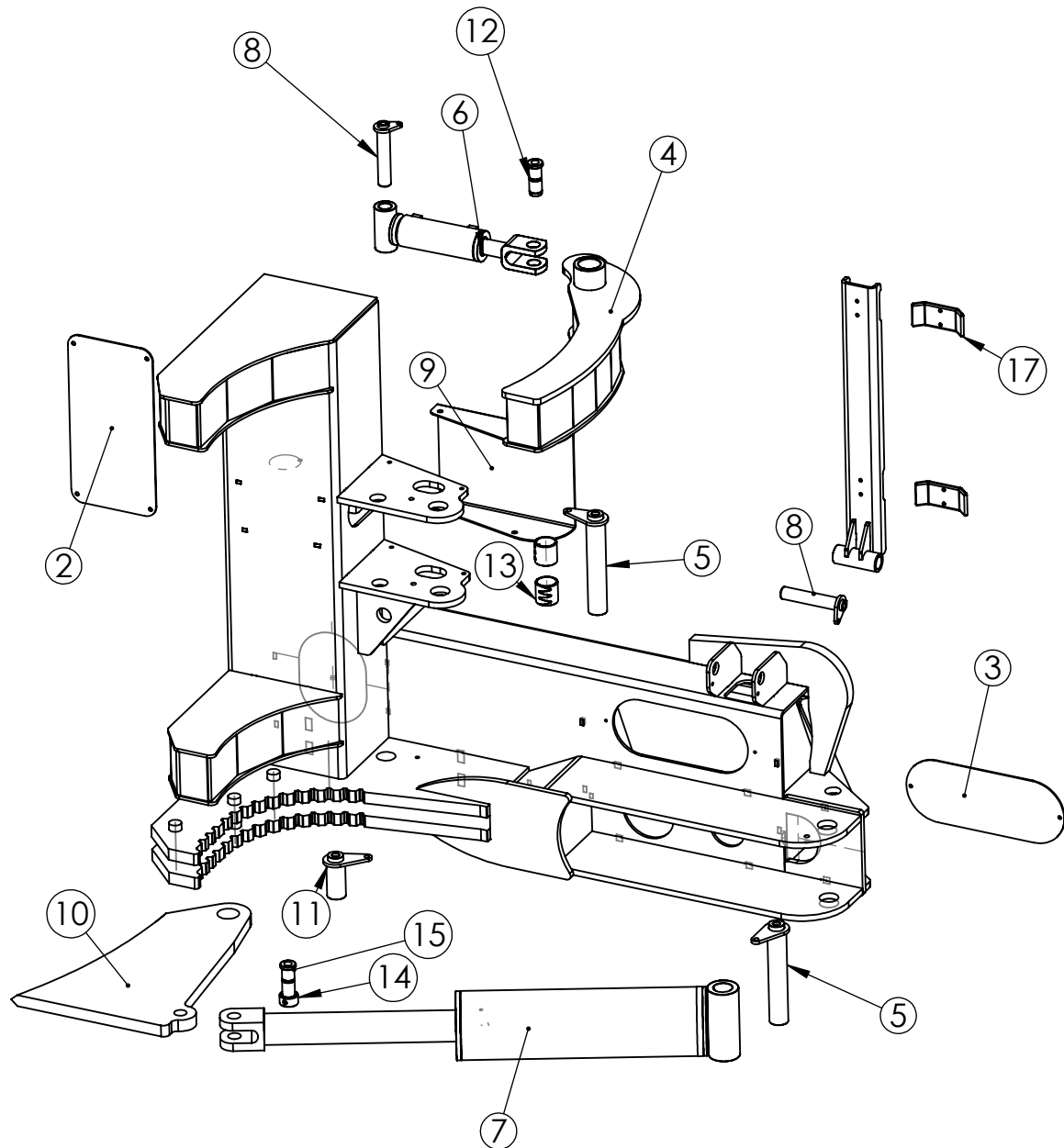


ITEM NO.	PART NUMBER	DESCRIPTION	QTY.
1	D003040	ISH512G main frame	1
2	ISH512G-34	Tower back cover	1
3	ISH512G-40	Hose cover	1
4	D003041		1
5	D001948	1.5 x 8.125 flange pin assembly	2
6	T1006	Cylinder 2 x 13 x 16.38	1
7	D002555	Cylinder, 5 x 24.38 x 38.88	1
8	D001028	1 x 5" Flange Pin	2
9	ISH512G-35	Cylinder protection plate	1
10	AR400 D002565	12" incisor blade	1
11	D001974	1.5 x 3 flange pin assembly	1
12	P2022	1 x 2.25" Swing snap ring pin, greaseable	1
13	D001463	Long press in bushing for 1.5" pin - Connex	2
14	D003134	1x.75 Incisor bushing with cross hole	1
15	D003133	1144 Stress Proof 1 x 2.25" incisor pin, greaseable	1
16	D003158	Hose support for ISH512G	1
17	D001160	Hose Clamp Plate	2



PROPRIETARY AND CONFIDENTIAL
 THE INFORMATION CONTAINED IN THIS DRAWING IS THE SOLE PROPERTY OF BAUMALIGHT. ANY REPRODUCTION IN PART OR AS A WHOLE WITHOUT THE WRITTEN PERMISSION OF BAUMALIGHT IS PROHIBITED.



Description

12" Horizontal incisor with grabber

Weight
lbs.

DATE

3/8/2015

DWG. NO.

ISH512G

REV
A

DO NOT SCALE DRAWING

SCALE: 1:50

SHEET 1 OF 1