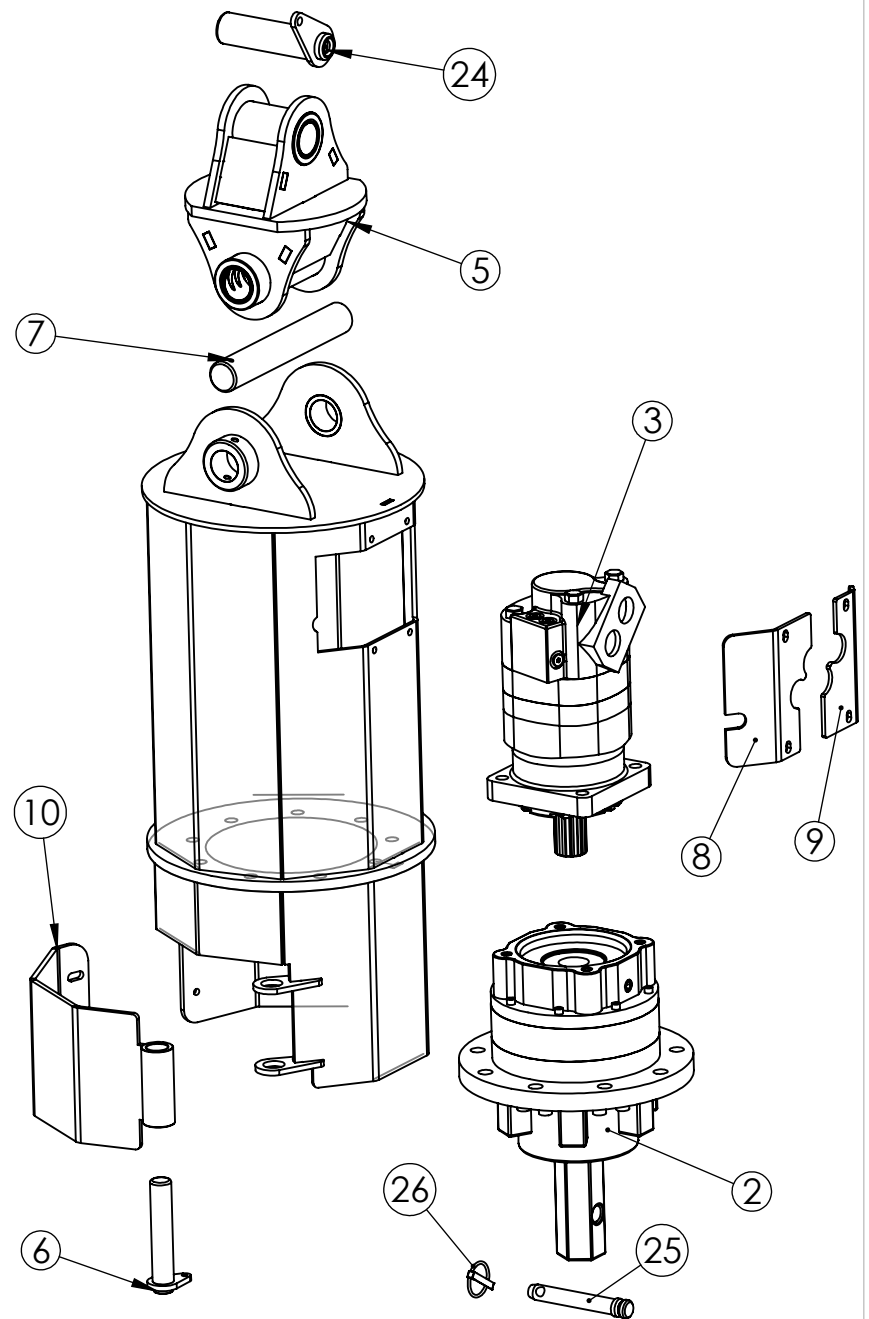


ITEM NO.	PART NUMBER	DESCRIPTION	QTY.
1	D001290		1
2	D001197	Planetary Gearbox	1
3	D001334	RC780 14T motor	1
4	D001576	RC780 Barrel and Nuckel	1
5	D002016	Pivot Knuckle	1
6	D001028	1 x 5" Flange Pin	1
7	P2006	Swing Pin 1.5x10	1
8	RC780-12	Motor closer	1
9	RC780-14	Motor closer	1
10	D001315	Door	1
11	D001291		1
12	RC780-1	Cylinder bottom	1
13	RC780-2	Body plate with hole	1
14	RC780-4	Body frame plate	2
15	RC780-5	cylinder cap plate	1
16	RC780-6	Side with door	2
17	P2031	3/8" Step bushing with cross hole	1
18	P2030	3/8" Step Step bushing	1
19	RC780-7	Guard plate with tab	1
20	RC780-9	Bolt protecting plate	1
21	RC780-8	Bolt protecting plate	1
22	RC780-10	Top Pin holder for main bolt door	2
23	D001032	QT Weldment	1
24	D001953	1.5 x 5.25 flange pin assembly	1
25	D002008	cross pin	1
26	S1014	3-Point Lynch Pin	1



PROPRIETARY AND CONFIDENTIAL
 THE INFORMATION CONTAINED IN THIS
 DRAWING IS THE SOLE PROPERTY OF
BAUMALIGHT. ANY REPRODUCTION IN
 PART OR AS A WHOLE WITHOUT THE
 WRITTEN PERMISSION OF **BAUMALIGHT**
 IS PROHIBITED.



Description

Weight
lbs.

DATE

9/29/2009

DWG. NO.

RC780

REV
A

DO NOT SCALE DRAWING

SCALE: 1:50

SHEET 1 OF 1