

**PROPRIETARY AND CONFIDENTIAL**  
 THE INFORMATION CONTAINED IN THIS  
 DRAWING IS THE SOLE PROPERTY OF  
**BAUMALIGHT**. ANY REPRODUCTION IN  
 PART OR AS A WHOLE WITHOUT THE  
 WRITTEN PERMISSION OF **BAUMALIGHT**  
 IS PROHIBITED.



# Description

Weight  
 930.79lbs.

DATE  
 3/28/2007

DWG. NO.  
**TN548-A3**

REV  
**A**

DO NOT SCALE DRAWING

SCALE: 1:64

SHEET 1 OF 3

ITEM NO.	PART NUMBER	DESCRIPTION	QTY.
1	D001016	Assembly, do not show in BOM	1
2	D001015	13 Tooth Sprocket with seal guard for large planatary	1
3	D001006	Planetary Gearbox	1
4	P2035	.875 cross pin for trencher sprocket	1
5	H1005	355 14T Motor	1
6	S4806	S4806 - 6" x 48" Trencher Chain	1
7	Full Chain	Full Chain without teeth	1
8	D002365	Full Link	35
9	Chain link connector	Chain link connector	2
10	full link	Chain Link	1
11	C2008	Trencher Cup Tooth - Left	18
12	C2012	Trencher Cup Tooth - Right	17
13	D001594	14T 1-1/4 BM5-200cc, custom motor	1
14	G2085	Planetary Gearbox	1
15	D001239	Side auger	1
16	M4806	6"x 48" 50/50 Rock & Cup tooth Trencher chain	1
17	D002367	Rock tooth link - Left	12
18	C2015	Rotary Cutter R.	1
19	D002332	Carbide tipped Rock Tooth	24
20	D002368	Rock Tooth Link - Right side	12
21	Full Chain	Full Chain without teeth	1
22	C2008	Trencher Cup Tooth - Left	11
23	C2012	Trencher Cup Tooth - Right	11
24	Z96503	Manual Tube 3-1/2 Short	1
17	D001262	Complete idler assem with cylinder for 48"	1
26	T2010	Idler Bracket Assmby	1
27	T2020	Trencher Cylinder	1
28	T2012	Grease Pin Assembly	1
29	B2019	Ider Assembly W/ Bearings	1
30	T2008	Crumber scraper bar	1
31	T2086	Dirt Flap Pivot Plate	4

**PROPRIETARY AND CONFIDENTIAL**  
 THE INFORMATION CONTAINED IN THIS  
 DRAWING IS THE SOLE PROPERTY OF  
**BAUMALIGHT**. ANY REPRODUCTION IN  
 PART OR AS A WHOLE WITHOUT THE  
 WRITTEN PERMISSION OF **BAUMALIGHT**  
 IS PROHIBITED.



Description

Weight  
lbs.

DATE

DWG. NO.

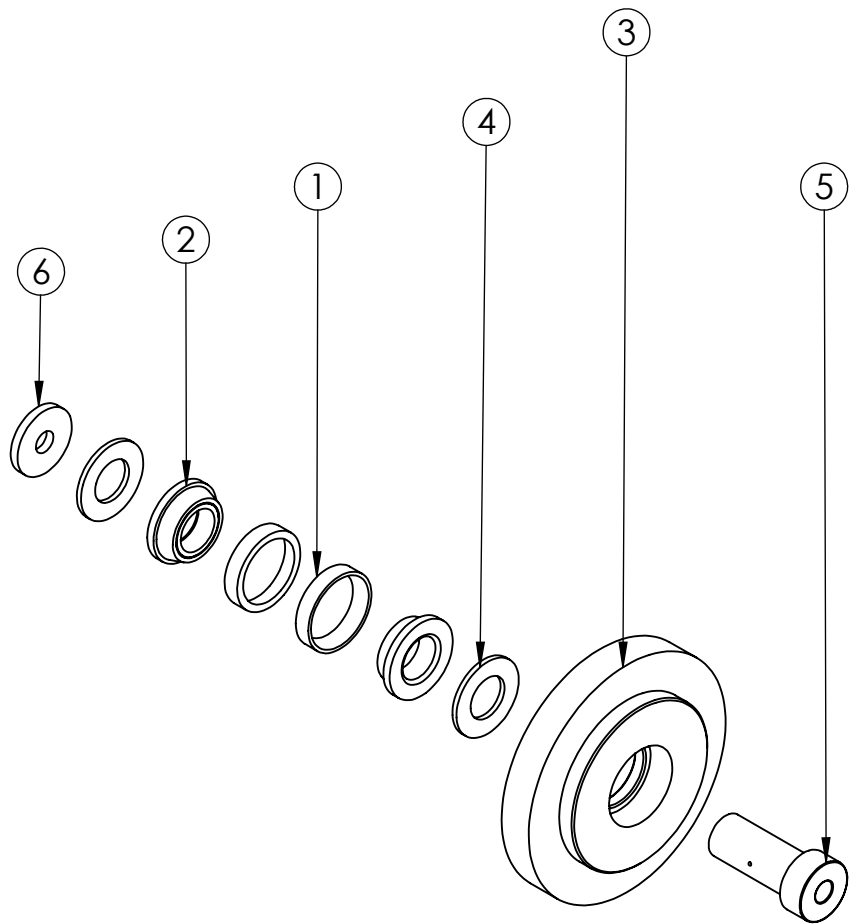
REV  
**A**

DO NOT SCALE DRAWING

SCALE: 1:64

SHEET 2 OF 3

ITEM NO.	PART NUMBER	DESCRIPTION	Martin Farm Wagen/QTY.
1	B2016	Bearing insert	2
2	B2015	Bearing 1.25"	2
3	B2017	Trencher Idler pulley	1
4	P2037	Dirt washer for trencher idler bearings	2
5	P2034	Trencher Idler Pin greasable	1
6	T2080 250 TN548-29	Holder washer	1



**PROPRIETARY AND CONFIDENTIAL**  
THE INFORMATION CONTAINED IN THIS DRAWING IS THE SOLE PROPERTY OF BAUMALIGHT. ANY REPRODUCTION IN PART OR AS A WHOLE WITHOUT THE WRITTEN PERMISSION OF BAUMALIGHT IS PROHIBITED.



Description

Idler Assembly W/ Bearings

Weight  
lbs.

DATE

5/16/2007

DWG. NO.

**B2019**

REV  
**A**

DO NOT SCALE DRAWING

SCALE: 1:64

SHEET 3 OF 3